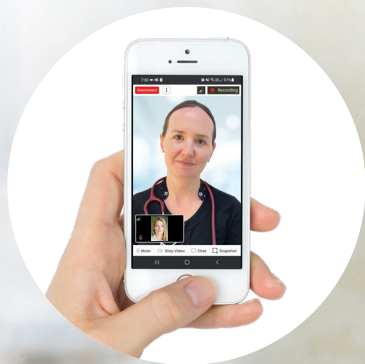


**My Emergency Doctor  
allows you to connect  
with a specialist emergency  
doctor, after hours.**

**FREE  
SERVICE\***



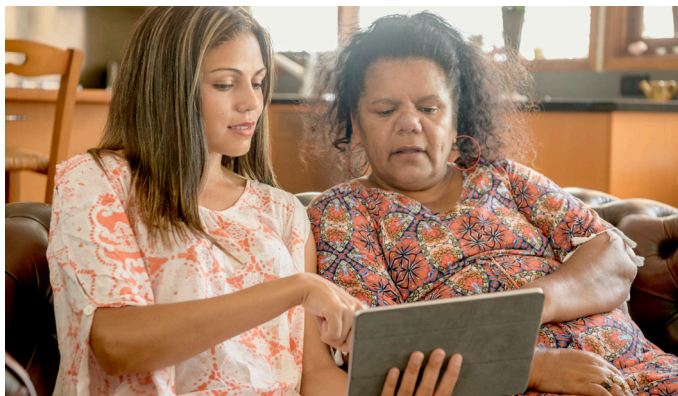
**My Emergency Doctor** is a telehealth service providing access to an emergency specialist for acute medical conditions when a person's usual doctor isn't available and they're not sure if they need to go to an emergency department. Through a partnership with Western Victoria Primary Health Network, residents of western Victoria can access the service after hours\* at no cost. **For more information about the after hours service, visit [myemergencydr.com/westernvictoria](https://myemergencydr.com/westernvictoria).**

**Need to speak to a doctor?**

**Connect via [myemergencydr.com](https://myemergencydr.com) or call 1800 001 141.**



Delivered in partnership with Western Victoria Primary Health Network



## When to call

When you or someone you know experiences unexpected symptoms, feels acutely unwell or suffers from an injury, it can be difficult to know where to get help after hours. If you experience any of the following conditions, connect to **My Emergency Doctor** for immediate care:

Abdominal pain	Acute injury	Concussion
Fainting	Fever	Headache
Head injury	Rash	Vomiting

If the patient is unconscious, has chest pain, difficulty breathing, uncontrolled bleeding or has been in a major accident, please dial 000.

## Are you eligible for free access?

The service is funded by the Australian Government under the **Primary Health Network program**. Residents of western Victoria can access this service after hours\* at no cost.

To obtain your free consultation go to [myemergencydr.com](https://myemergencydr.com) on your smart device, click on CALL DOCTOR and simply provide your details. Alternatively, you can dial 1800 001 141 to connect to a doctor.



Scan the QR code with your smartphone camera to learn more about us.



Delivered in partnership with Western Victoria Primary Health Network

\* Free until 31 Aug 2022. Consultations are free before 8am and after 6pm weekdays; before 8am and after 12pm Saturdays; and all day Sundays and public holidays. Calls made outside these hours and/or calls from residents outside of the eligible postcodes, will incur a fee.